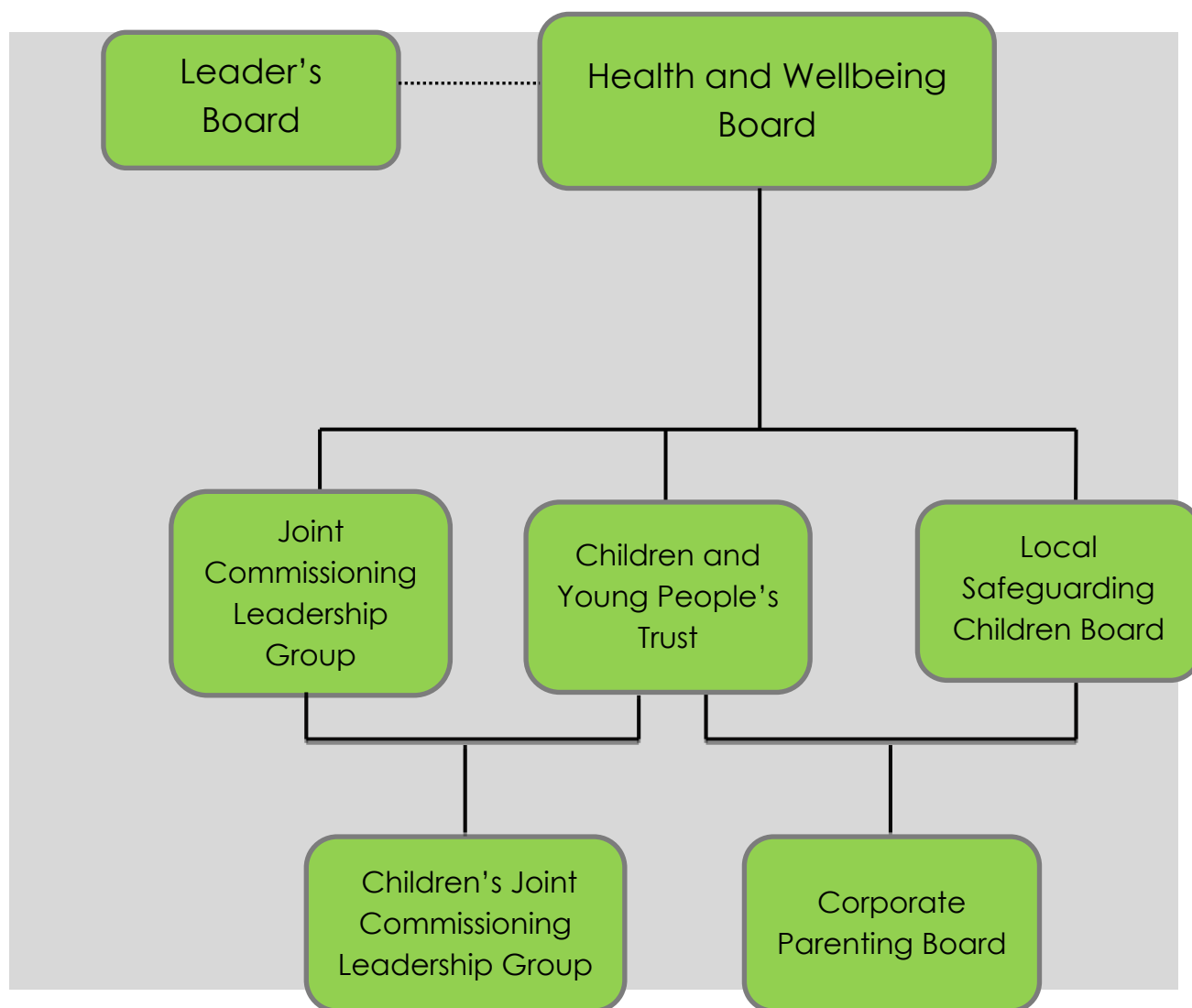


Governance for the Improvement Plan



The above structure sets out the key partnership governance around the improvement plan. The Council's Scrutiny Committees and the management accountability structures within the Council will also play key roles in monitoring, scrutinising and challenging progress of the plan. Further details of these arrangements are set out on the following pages.

Partnership Governance

Health and Wellbeing Board

The **Health and Wellbeing Board** provides the vision and coordinated drive to address the health and wellbeing needs of the local population of Cheshire East to reduce unacceptable and avoidable variations in health and healthcare. Services for children, young people and their families come under the 'Starting Well' and 'Living Well' priorities of the Health and Wellbeing Board. This Board will hold the other children and young people's partnerships to account for their delivery of the improvement plan.

Leader's Board

The **Leader's Board** is responsible for joint commissioning and integrated delivery. The members of this Board are high level representatives from the Council, Police and Crime Commissioner, the Chair of the Health and Wellbeing Board, and Fire Authority. Any issues or risks to the implementation of the improvement plan that cannot be resolved by the other partnership boards will be escalated to the Leader's Board, in particular, where these issues relate to partners not represented on the Health and Wellbeing Board.

Local Safeguarding Children Board

The **Local Children's Safeguarding Board (LSCB)** is an independently chaired statutory partnership board that works together to ensure that where children are harmed, or at risk of harm, all agencies actively cooperate to safeguard them and promote their welfare. The LSCB is supported by an LSCB Executive Group and a number of sub-groups that progress separate work streams of the LSCB Business Plan. The LSCB will monitor and challenge partnership progress against the improvement plan.

Children and Young People's Trust

The **Children and Young People's Trust** is a partnership Board that aims to improve outcomes for all children and young people in Cheshire East through strategic leadership and decision making, determining joint priorities, joint planning, and ensuring integrated working. The Trust is responsible for ensuring that the Children, Young People's Plan, and the wider partnership supports the improvement plan.

Joint Commissioning Leadership Group

The **Joint Commissioning Leadership Group** co-ordinates joint commissioning across the partnership for children's and adults' services to ensure this is joined up and the partnership works effectively together to meet the needs of people within Cheshire East.

Children's Joint Commissioning Leadership Group

The **Children's Joint Commissioning Leadership Group** is focused on joint commissioning arrangements for children's services to ensure these are prioritised. It co-ordinates joint commissioning across the partnership for to ensure this is joined up

and the partnership works effectively together to meet the needs of children and young people within Cheshire East.

Corporate Parenting Board

The **Corporate Parenting Board** is mainly made up from officers from across the Council's services and partners that can impact on outcomes for cared for children and young people. The Board will be responsible for ensuring delivery of the improvement plan areas for cared for children and young people.

Other Key partnership input to the improvement plan

It is proposed that a **Partnership Chair's Group**, made up from the Chairs of the children and young people's partnership boards and relevant officers, will meet quarterly. This group will use information from other groups to assess progress against the Improvement Plan as a whole. They will inform the quarterly progress reports to the Health and Wellbeing Board. This group will also ensure that cross-partnership issues are effectively aligned.

There are a range of other partnerships that will also help to deliver and monitor the effectiveness of this improvement plan. These include the **Cheshire East Domestic Abuse Partnership Board** that co-ordinates the shared work of all key statutory and voluntary sector communities to keep people safe from domestic abuse and the **Local Safeguarding Adults Board** that will need to ensure that adult safeguarding arrangements are effective in prioritising the needs of children and young people.

Council Member Governance

Overview and Scrutiny Committee

The **Children and Families Overview and Scrutiny Committee** and the **Health and Adult Social Care Overview and Scrutiny Committee** form part of the Committee structure of the Council and will carry out the overview and scrutiny functions of the improvement plan on behalf of the Council. These committees will make recommendations to the Council's **Cabinet** where they identify areas that need to improve.

Council Officer Governance

Management Group Board

The Council's **Management Group Board** brings together Chief Officers from across Council departments and oversees delivery of the improvement plan across Council services. The Board will also deal with risks and issues that need to be resolved at a wider council level.

Children and Families Senior Leadership Team

The **Children and Families Senior Leadership Team** are senior managers from across the Council's Children's Services and is responsible for ensuring delivery of the improvement plan at a service level. The team will monitor, challenge and ensure appropriate reports are presented to other bodies in respect of the improvement plan.